

## Annual Report Map 2024

### Map 3 of Exhibit F Projected Reclamation Activity for 2024

Permit No. M-1981-107  
ELB Stone, Inc

January 16, 2024  
Map prepared by  
Bernard Buster

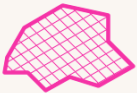
*Bernard D. Buster*



To Date Primary Distrubed Area



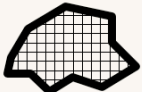
To Date Secondary Distrubed Area



Primary Activity Thru 2024

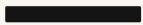


Secondary Activity Thru 2023

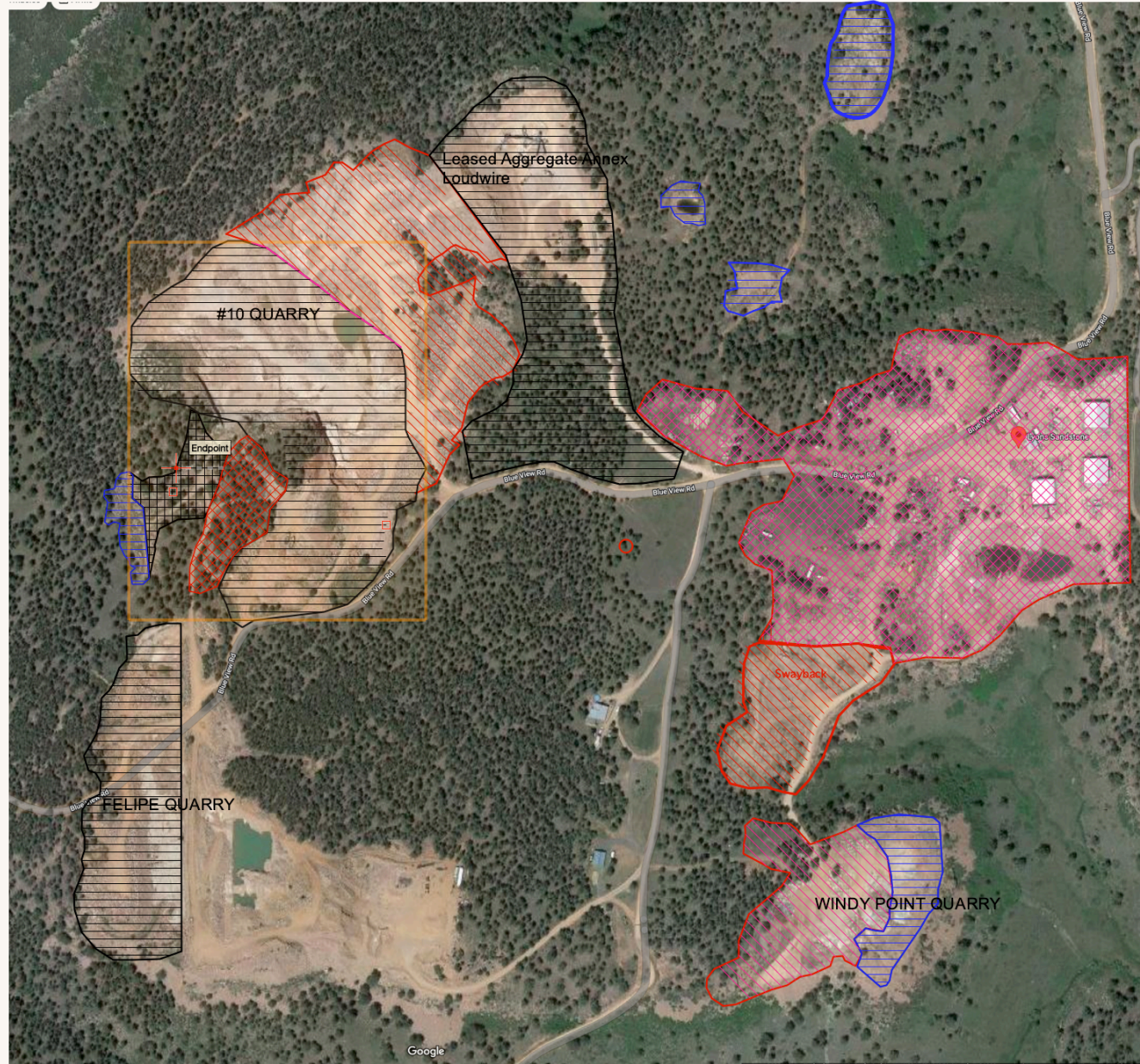


Phase 1 Reclamation Area. Expect Phase  
2 to begin in 2027



  
This bar is 322 feet long

The terms Primary, Secondary, and Tertiary are used on this map to identify different levels of disturbance within the permitted boundaries. The term Primary designates areas where extraction of stone and storage of overburden is occurring. The term Secondary designates areas where activity ancillary to quarrying is occurring. Some leveling may occur similar to that in the production area. Storage of finished stone, stone in process and waste stone with possible future value is stored in secondary areas. Tertiary areas are areas within the permit but where little to no activity is occurring.



#### North East Point

Northeast Point Quarry is now 60% filled with rubble and dirt and phase 1 reclamation could be completed in 5 years

#### Number 10 Annex

Quarry Number 10 Annex is leased to Loudwire Diesel which is crushing our waste rock. We anticipate that they will increase the disturbed area that they are operating in for another 10 years

#### Number 10

Quarry Number 10 is our primary source of Lyons Red Sandstone. We estimate that there are reserves that could last 50 years.

#### Hotchkiss Production Area

Hotchkiss Production Area was a large quarry (by our standards) but the rock is less desirable and as we expand our production facilities (Secondary impact) we are filling in the area to the south of the buildings in order to increase the real estate necessary to expand our production facilities. 50 years

#### Windy Point

Windy Point Quarry is another large quarry but again the rock there is less than desirable. We are filling and leveling this quarry and using the leveled areas for stone storage and as an area to split stone from other sources into flagstone. Could be reclaimed in 40 years

#### Swayback

Windy Point Quarry is another quarry with less than desirable stone and we are filling this quarry in in order to create more stone storage area. Phase 1 of reclamation could occur by 2030

#### Felipe Quarry

Felipe Quarry is another quarry that we are not quarrying due to undesirable stone. Phase 1 of reclamation could occur by 2028